

## State of Wyoming Corner Record

(In compliance with the *CORNER PERPETUATION AND FILING ACT*, Wyoming Statutes, 1997, Section 33-29-140, et. seq., and the Rules and Regulations of the Board of Registration for Professional Engineers and Professional Land Surveyors)

Reverse side of this form may be used if more space is needed.

Record of original survey and citation of source of historical information (if corner is lost or obliterated). Description of corner monumentation evidence found and/or monument and accessories established to perpetuate the location of this corner. Sketch of relative location of monument, accessories, and reference points with course and distance to adjacent corner(s) (if determined in this survey). Method and rationale for reestablishment of lost or obliterated corner.

**G.L.O. Record:** U.S. Deputy Surveyor, Henry G. Hay, September 1, 1870.; 80.00 Chains.....Set Granite Boulder 15 x 10 x 5 for corner to Sec's 13, 14, 23 & 24

**Found:** 14 ins. x 8 ins. x 6 ins. marked granite stone, surrounded with a buried collar of stones. NE'yly corner of the stone was broken off with two chiseled grooves on the west face and three chiseled grooves on the north face (non-typical of the G.L.O. marking scheme) and approximately 2 ft. south of a east-west fenceline and 6 ft. east of a north-south fenceline.

**Set:** 2 ½ ins. diam. aluminum post, 30 ins. long, 26 ins. in the ground with a 3 ¼ ins. aluminum cap marked as noted below. Buried a 1 x 1 x 2 ins. orange fluorescent magnetic module in the bottom of the monument hole and buried the original stone alongside as a memorial. Set a 5 ft. steel fence post witness 1 ft. north.

Aluminum Cap Markings

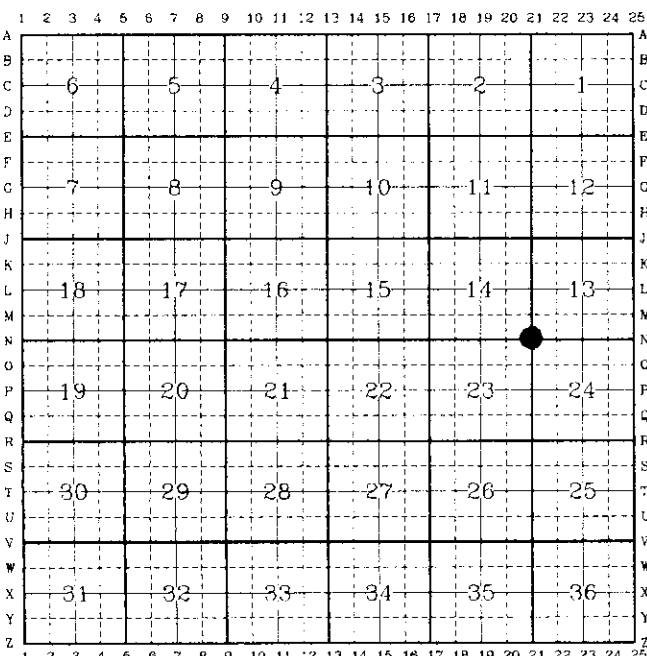
T13N R67W  
S14 | S13  
S23 | S24  
 1999  
 P.L.S. 2927

See back of this sheet for measurements to other found or set monuments in the area.

Date of Field Work: Jan.12,1999

Office Reference: A.V.I. Job No. 2-2085C

CROSS INDEX DIAGRAM



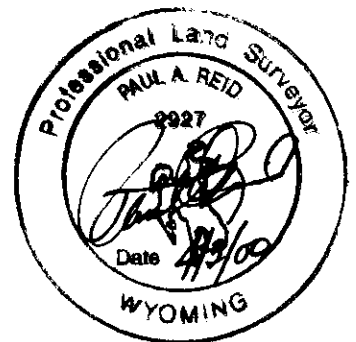
**Firm/Agency, Address**

Paul A. Reid, P.L.S.  
 A.V.I., p.c.  
 2035 Westland Road  
 Cheyenne, WY 82001

Telephone Number:  
 (307) 637-6017

This corner record was prepared by me or under my direction and supervision.

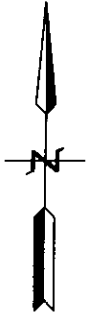
*SEAL & SIGNATURE*



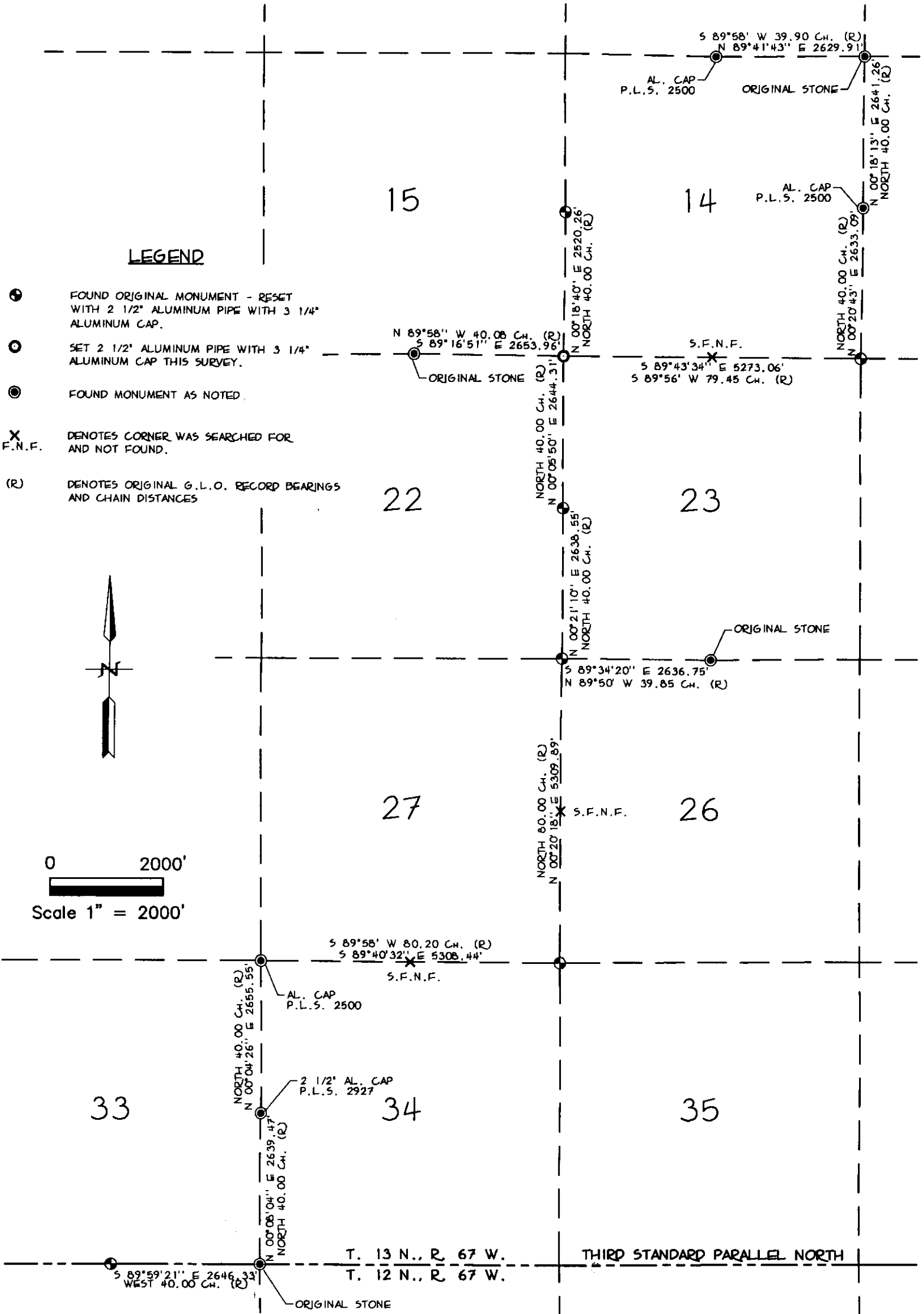
Corner Name: SE Section: 14 T.13N., R.67W.; 6<sup>th</sup> P.M. Cross-Index No.: N-21  
 SBRPEPLS/PLSW:March 1994

**LEGEND**

- ⊕ FOUND ORIGINAL MONUMENT - RESET WITH 2 1/2" ALUMINUM PIPE WITH 3 1/4" ALUMINUM CAP.
- SET 2 1/2" ALUMINUM PIPE WITH 3 1/4" ALUMINUM CAP THIS SURVEY.
- FOUND MONUMENT AS NOTED.
- X DENOTES CORNER WAS SEARCHED FOR AND NOT FOUND.
- S.F.N.F.
- (R) DENOTES ORIGINAL G.L.O. RECORD BEARINGS AND CHAIN DISTANCES



0 2000'  
 Scale 1" = 2000'



**SKETCH OF SURVEY**

T. 13 N., R. 67 W., 6TH P.M.  
 LARAMIE COUNTY, WYOMING